



Nye værdikæder fra hamp – et internationalt perspektiv

Peter Mose Larsen
Prolutica ApS

Green Transition – NOW!

We Must Do Something!

Production of soybean has a very negative environmental factor:

生产大豆蛋白对环境造成的影响

CO₂-problems 二氧化碳问题:

Long transportation 长途运输

Deforestation 森林退化

Other Environmental problems:

其他环境问题:

Land erosion 土壤侵蚀

Use of pesticides 杀虫剂

Destruction of bio-diversity

破坏生物多样性

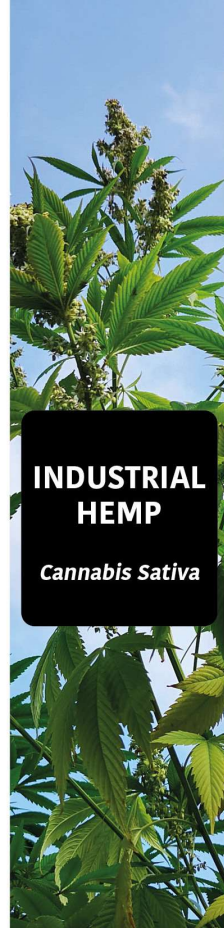
Use of GMO-plants 使用转基因

Price 价格:

Increased > 12% over the last 2 years 过去 2 年上涨超 12%

A Solution Is Needed Now!

Value Chain - Prolutica ApS



FROM BLACK WASTE TO GREEN GOLD

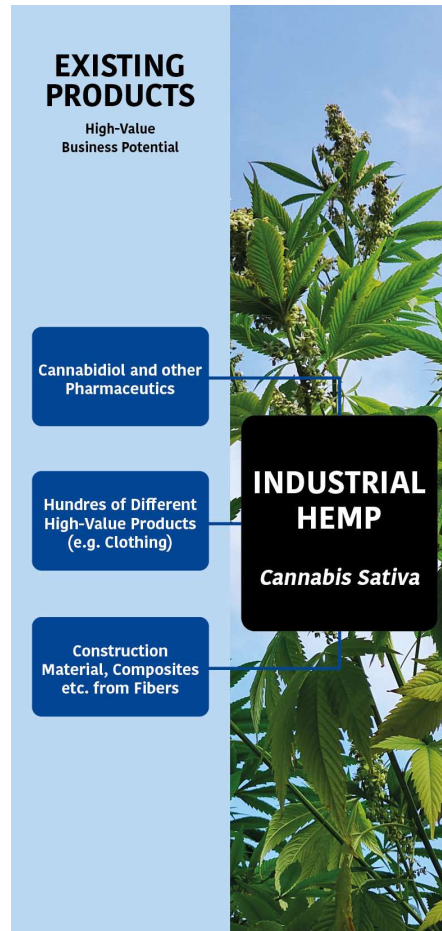
New Innovative Technologies for Sustainable Production of Green Bio Protein
and other Valuable BANS from Biological Plant Waste



Industrial Hemp: Known for more than 2500 yrs; > 50.000 products; leading countries China and Canada

Kilde: Prolutica

Value Chain - Prolutica ApS



FROM BLACK WASTE TO GREEN GOLD

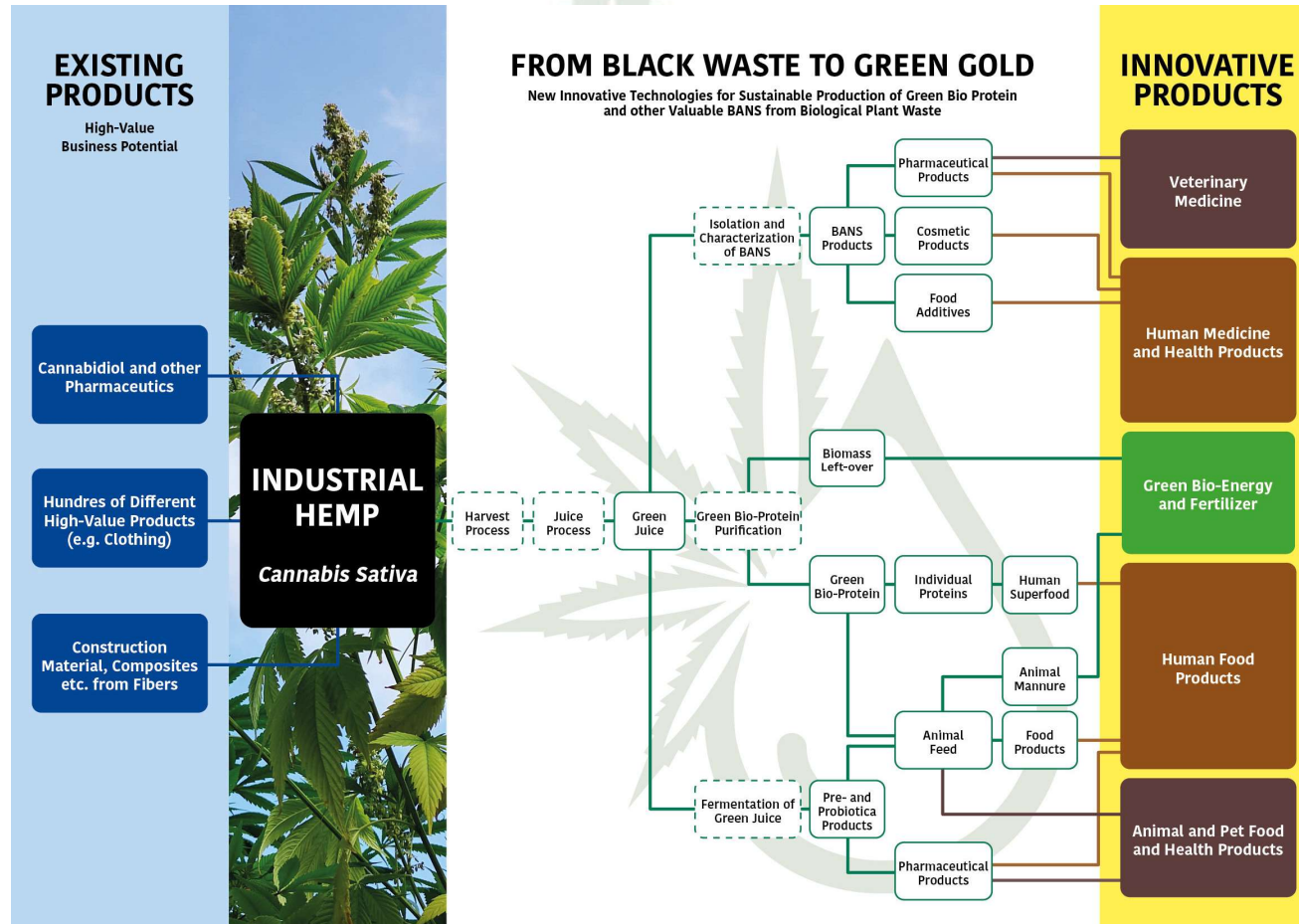
New Innovative Technologies for Sustainable Production of Green Bio Protein and other Valuable BANS from Biological Plant Waste



Yearly turn-over for industrial hemp products: Billion 5,33 US\$ & Many new bussiness possibilities

Kilde: Prolutica

Value Chain - Prolutica ApS



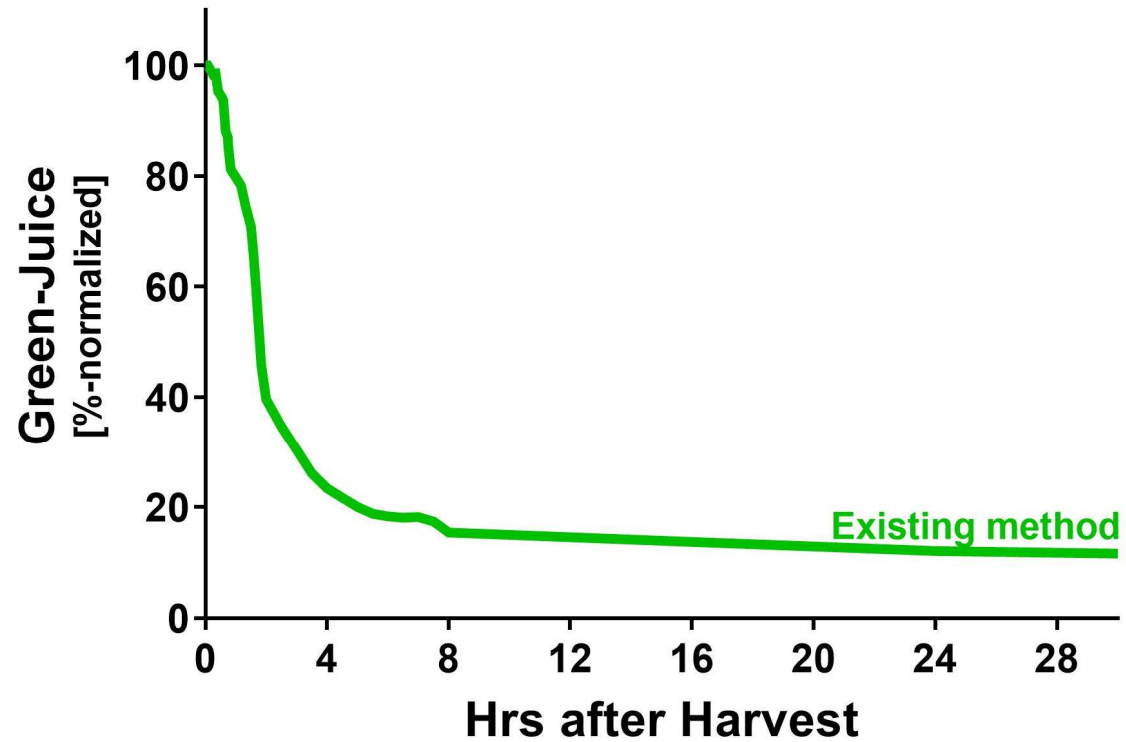
Cascade crop; High CO₂-assimilation; Suitable for organic cultivation & Enormous business potential

Kilde: Prolutica

Binding of Green-Juice

Cannabis sativa

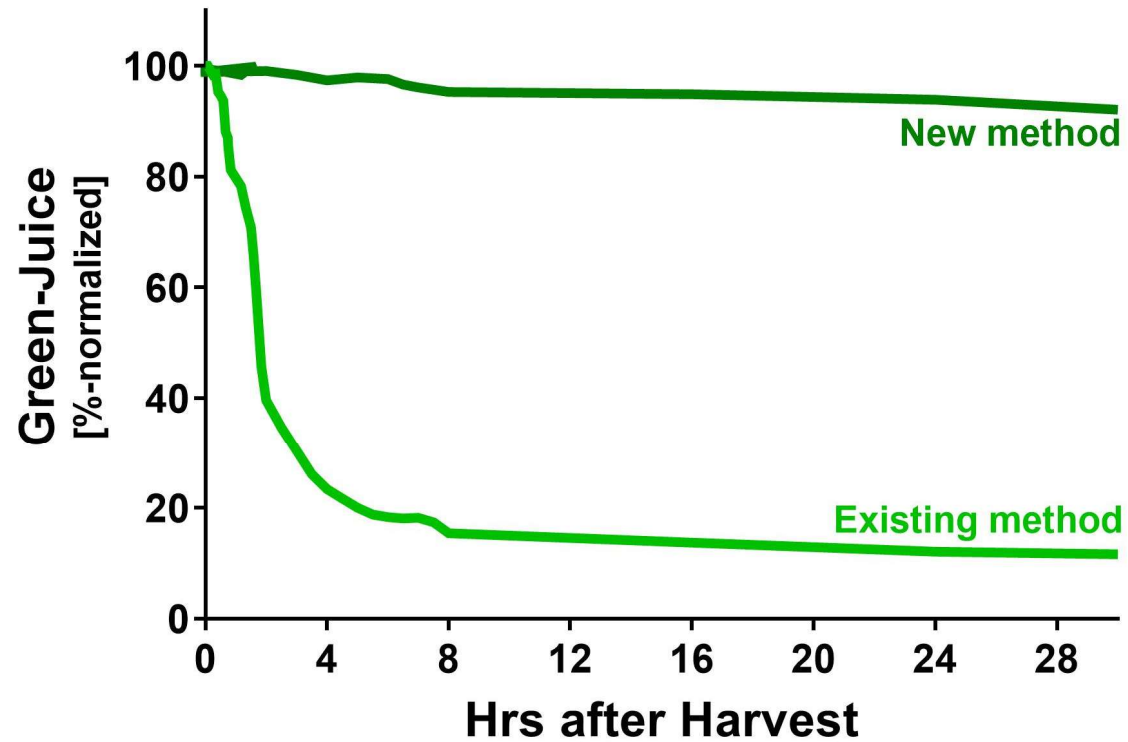
Loss of Green-Juice after Harvest



Binding of Green-Juice

Cannabis sativa

Loss of Green-Juice after Harvest



Håber I har et god møde - Har I spørgsmål?

Tak for jeres opmærksomhed

Kontakt: pml@prolutica.com

